



**YBM - Yacht Broker Mallorca - since 1987**  
Boat & Yacht Broker S.L.U. - Fred Hecken  
Muelle Viejo 6E/Pier 46, E-07012 Palma de Mallorca  
Tel: (+34) 971 724 463 T&Fax: 971 729 454 Mobil: 661 94 22 92



[www.yachtbrokermallorca.eu](http://www.yachtbrokermallorca.eu) Email: [yachtbrokermallorca@gmail.com](mailto:yachtbrokermallorca@gmail.com)

**Second-hand yacht /excellent condition/ 1<sup>st</sup> owner**



**Horizon**

**ELEGANCE 60**  
1.250.000 Euro

launched 2008  
- EU-Tax

Ref 8584 approx. asking price in: 1.080.000 GBP or 1.787.000 US Dollar 15.08.2009 change rate at [xe.com](http://xe.com)

<b>BUILDER:</b>	Horizon Yachts, Taiwan in order for Drettmann Germany standard CE Norm Class A - <b>Built in 2007</b> , launched in 2008		
<b>MATERIAL:</b>	GRP hull, superstructure and decks, <b>Teak laid side decks</b> , cockpit + fly bridge + bathing platform		
<b>LYING:</b>	Europe / Spain - Mallorca		
<b>LOD</b>	<b>18.30 m</b>	60´	
<b>Beam</b>	<b>5.30 m</b>	17´4"	
<b>Draught (unloaded)</b>	<b>1.20 m</b>	3´11"	
<b>Reg. Tonnage</b>	<b>38.000 kg</b>	83.774 lbs	
<b>Tankage Fuel</b>	<b>3.700 litres</b>	814 Imp. Gal // 978 US Gal	
<b>Tankage Water</b>	<b>950 litres</b>	209 Imp. Gal // 251 US Gal	
<b>Tankage Holding</b>	<b>250 litres</b>	56 Imp. Gal // 66 US Gal	

**ENGINES: 2x MAN** 10-cylinder V10-1100CR **diesel, 1.100 hp** ( 809 kW) each ( ca. 140 hours) - **cruising speed: approx. 26 knots; top speed approx. 30 knots** information by shipyard on half load, clean underwatership and propellers and in standard equipment and test load - **trim taps electric/hydraulic**

**ENGINE ROOM** / hold - Engine room and spacious storage lazarette can be accessed via a hatch in the cockpit floor or via stairs that can be swung open. This enables access to all technical equipment and provides plenty of storage space - Standing height in the engine room - 24V and 230V lighting - 230V sockets - The main engines exhaust underwater - Fuel "RACOR" filters - Automatic fire extinguishing system in the engine room - Engine room with splash-proof air conditioning with impact resistant bulkheads which can be locked - 24V and 230V engine room fan - Stainless steel shafts and rudder blades - Access to rudder room with large hold and lockers - This hold can be reached via the hydraulic stairs or through a deck hatch - this hold can be converted into a cabin for crew members

## ELECTRICAL:

- 230V electricity shore power supply via 2 x 50 amp. shore connection sockets or via the Generator - All electric circuits have individual breakers for protection
- **3 battery chargers** for domestic /starter-system (75 amp domestic, 50 amp starter) and for the generator battery - All batteries are "gel-batteries" - 2 + 2 starter batteries - the yacht has 4 batteries for its electrical system
- Electricity can also be supplied via a DC/AC **1500W converter**

**GENERATOR:** 17.5kW diesel generator in sound-proof shield

**BOW & STERN THRUSTER:** Heavy duty **electric bow and stern propeller**

**AIR CONDITIONING**, reverse cycle for cooling/heating

## WATER & PLUMBING:

- Freshwater – centrifugal pump (24V/230V) - Hot-water –heater 230V (75 litres)
- 4 automatic bilge pumps and 1 manual pump
- electric operating toilets fitted, holding tank (either pumped out to sea or via dockside discharge)
- Deck-washing via fresh-water connection or separate deck-washing pump
- hot/cold shower at stern – washing machine

**NAUTICAL & NAVIGATION:** all instruments and controls on inner & fly helm station

- electric/hydraulic wheel steering system
- **3x station engine and bow-/stern thruster control** (inner, fly and aft deck)
- **Compass + speed/log and depth** with repeater at fly
- **VHF radio** wit DSC with repeater at fly – with **INTERCOM** (cabins, saloon, fly, E/room)
- **RADAR + GPS / CHART PLOTTER** with overlay function on both helm stations
- **AUTOPILOT** with repeater at fly

**ENTERTAINMENT:** **automatic Sat-TV system - flat-screen TV´s – video – music system by BOSE: stereo radio/CD player and CD-changer**

## SAFETY & VARIOUS:

- safety equipment + life-raft, electrical searchlight, fire extinguisher – deck hatch (escape hatch) - windscreen washers with freshwater - pulpit and safety rails
- Bimini sun awning, sun shade for fly, covers for fly-bridge, winter persenning
- cockpit table and chairs

## FLYBRIDGE

Formed and tinted acrylic windscreen with stainless steel frame - Upholstered seating  
Upholstered sunbathing area, the cushions fold up - **Wet-bar** with sink, fridge and grill  
Individual covers for all the furniture – teak laid floor - Indirect lighting under the seating  
**230V socket** - Upper helm-**position with electric** engine operation **and indicators (according to engine type)**, **hydra assisted** steering **and stainless steel wheel**, compass, log, echo sounder, VHF **radio with loudspeaker**, autopilot, GPS **with 10"** chart plotter- radar-**combination, rudder position indicator. Operating switch for: trim tabs, bow propeller, anchor winch, horn and instrument lighting.** - **Instruments protected by a stainless-steel framed, waterproof glass cover** - CD Radio **protected from splash-water with 2 waterproof loudspeakers** - GRP radar arch **with electric adjustable** search-light, **radar antenna, VHF and automatic TV/ radio antenna, navigation lights, horn, ensign mast** - **All exterior upholstery is made of imitation leather.**

## DECK FITTINGS:

There is a high bulwark around the side deck - rub rail around the ship and the bathing platform - The main deck is on one level i.e. no steps - **Solid Teak decking** on the after deck, the sunbathing platform and the stairs to the fly bridge as well as on the side decks and forward deck - 6 stainless steel cleats - each with a fairlead to protect the warps, stern cleats are installed under a cover in the locker - There is an integrated seat on the after deck with upholstered cushions and glass holders - chain stopper and stainless steel anchor, that can be operated from 3 stations - Integrated cushioned sunbathing area on the superstructure with an upholstered seat at the front of it - Escape hatch from the forward cabin - Cover for front windscreen - 2 spacious lockers in the front superstructure - A big fender and chain stow space under the front deck and deck-washing connection for freshwater - Stainless steel boarding ladder with teak steps - Two waterproof loudspeakers integrated in the fly-bridge roof - Cockpit and deck lighting in the fly-bridge roof and in the bulwark - Stair lighting  
230V socket in the cockpit - GRP table with stainless steel base in the cockpit, GRP stairway to the fly-bridge and upper deck with stainless steel sliding hatch - Spacious lockers situated in the after deck superstructure - GRP stairs to the bathing platform - Transom locker houses with two 50 amp shoreline sockets, freshwater connections as well as a fresh-water intake

### **Integrated stern shower (hot and cold)**

Boat equipment: mooring ropes + fenders + boathook (integrated)

2 shore supply cables

- **Electric reverse cycle anchor windlass**, operates by remote by control from both helm stations. **Main anchor and 75m chain** chain stopper and stainless steel anchor
- **electric / hydraulic BATHING PLATFORM, which allows easy use and easy storage of dinghy**
- **A hydraulic GANGWAY with 4 functions is integrated in the stern**

**HULL** construction and general description: Semi-displacement hull with extremely stable planning characteristics - even at low speed - Deep V bow sections ensure a clean entry - underwater hull constructed with an osmosis protective coating - all windows and portholes in stainless steel frames - All materials are selected from a wide range of superior products - Woods are lacquered with satin finish - Beds are supplied with mattresses and bed-spreads (but not in the crew quarters) - Curtains are made from quality furnishing fabric, blinds electrical operating - All rooms are equipped with lighting variations - both direct and indirect – e.g. in: all the curtain pelmets, around the beds, under seating as well as under each step of the staircase - All rooms have sufficient 230V sockets - Every bed and seat is designed to provide easily accessible storage space underneath - All sea cocks are fully bonded to earth and labelled for easy identification

## ACCOMMODATION / LAYOUT:

**Large cockpit aft with cockpit table and chairs** - Entrance to saloon has a door with a stainless steel frame

**SALOON:** **Sideboard** with lockers, cabinet for **TV** with flat screen and **stereo system** with 4 loudspeakers incorporating tuner and CD –player **BOSE** system - Storage for glasses and dishes (ELEGANCE design) - **Seating arrangements**, club table - plus 2 stools. - In lieu of standard Dining table is a **bar with extra fridge fitted**

**Inside helm position** with cockpit seat or chair - All electrical circuits are clearly marked/identified and have individual breakers. **Lower HELM Station** with electric **engine controls** - hydraulic assisted **steering** and stainless steel steering wheel, **compass, log, echo sounder, VHF** radio with loudspeaker and **intercom** function, daylight **radar, GPS** with colour **chart plotter, autopilot**, rudder angle indicator.

Operating switch for trim tabs, **bow and stern propeller**, anchor winch, windscreen wiper/washer system, horn and instrument lighting. Level indicator for: diesel, fresh water, and holding tank, bilge and shower pump control - with monitor lights. **Fully air-conditioned** - for cooling and heating

**GALLEY:** Situated between saloon and helm position - Equipped with stainless steel sink unit. Refrigerator (approx 220 litres) with freezer, combined microwave, oven and extractor shields, dishwasher, ceramic hob with 4 elements and rubbish bin - Crockery lockers

### 4x CABINS:

**Owner's cabin** – see photo - with double-bed, bedside tables and ample linen- and hanging-lockers, 4 opening portholes (with mosquito nets), CD radio with 2 loudspeakers, special ceiling décor lighting - access to en-suite bathroom

**Owner's en-suite bathroom** with glass partitioned shower, toilet, extraction fan, washstand and porthole – see photo

**VIP guest cabin** with double-bed , 2 bedside tables and plenty of drawers and hanging-wardrobes, 4 opening portholes (with mosquito nets), CD radio with 2 loudspeakers. Access to the VIP bathroom

**VIP bathroom** with glass partitioned shower, toilet, extraction fan, washstand and porthole – see photo

**Guest cabin** to port side with single berth (if need folding bunk berth above)

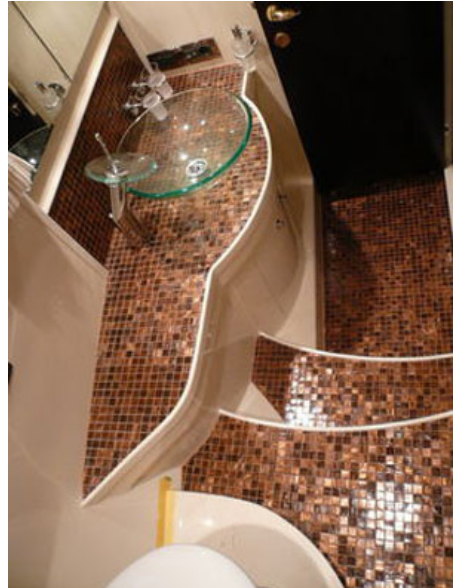
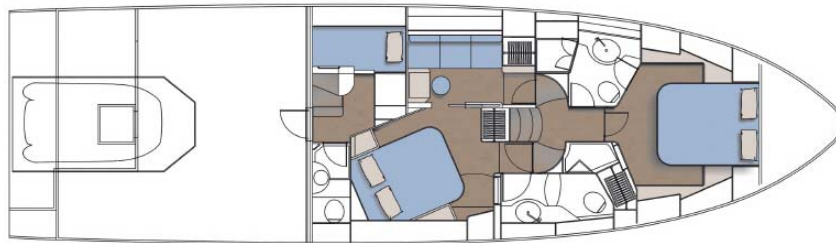
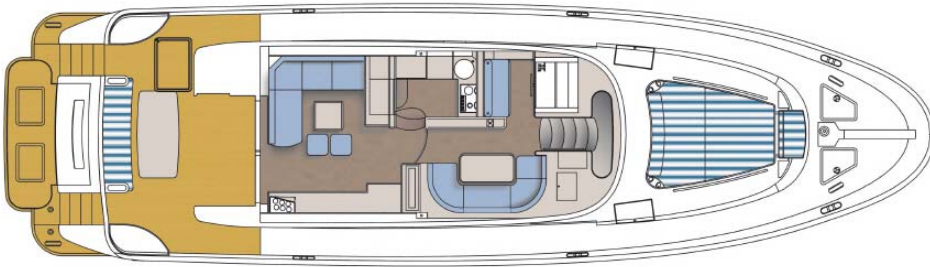
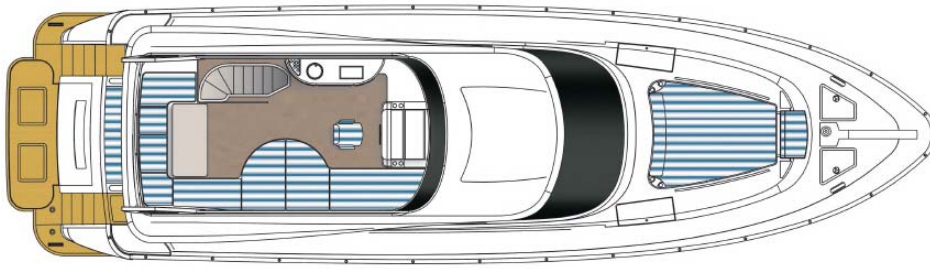
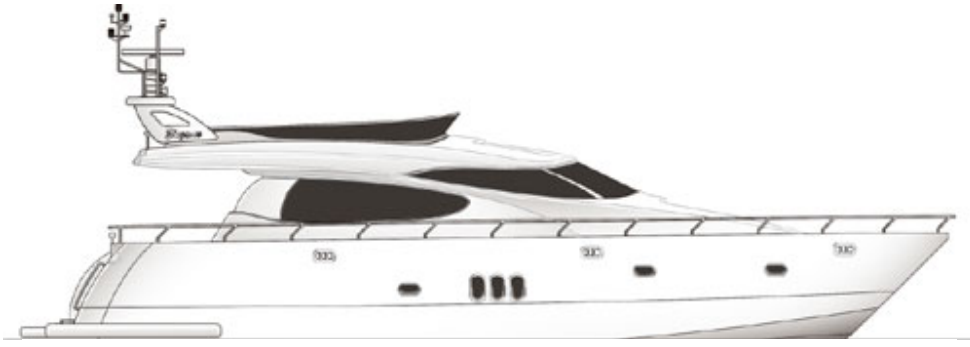
**Crew cabin** – pre-installed, at present not fitted out, just for storage and **washing machine**

All beds have slatted frames and bedside reading lights

**Each cabin is fully air-conditioned - for cooling and heating**

**COMMENT:** in a “like-new”, ready to go condition \* still under “full gurantee” \* underwater-paint “anti-fouling” done in 2009 – NEW price in 2008: over 2.300.000 Euro, reason for sale: upgrade to a larger motoryacht







#### Disclaimer

In this case we are acting as brokers only. The Vendor is not selling in the course of a business. Whilst every care has been taken in their preparation, the correctness of these particulars is not guaranteed. The particulars are intended only as a guide and they do not constitute a term of any contract. A prospective buyer is strongly advised to check the particulars and where appropriate at his own expense to employ a qualified Marine Surveyor to carry out a survey and / or to have an engine trial conducted, which if carried out by us shall not imply any liability for such engine on our part. Note to seller and purchaser: If the boat you are selling or purchasing is registered, please ensure that the registration is completed after the sale of the boat. If the purchaser wishes to cancel the registration is the duty of the seller to contact the Registry and inform them that the registration is to be cancelled. If the purchase wishes to continue with the registration, it is the duty of the purchaser to complete the relevant forms and post off the bill of sale to the Registrar.