



YBM - Yacht Broker Mallorca - since 1987

Boat & Yacht Broker S.L.U. - Fred Hecken

Muelle Viejo 6E/Pier 46, E-07012 Palma de Mallorca

Tel: (+34) 971 724 463 T&Fax: 971 729 454 Mobil: 661 94 22 92



www.yachtbrokermallorca.eu Email: yachtbrokermallorca@gmail.com

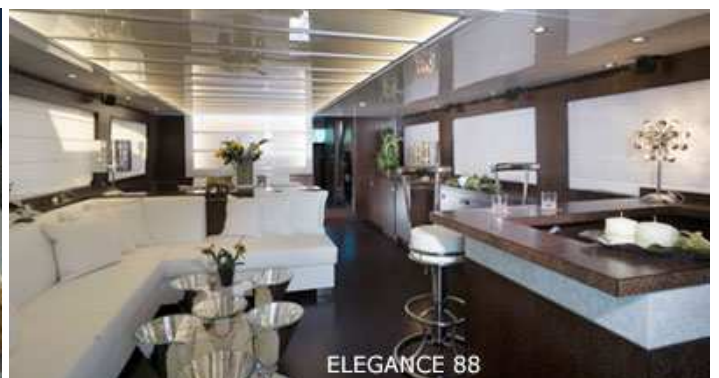
Second-hand yacht /excellent condition/ 1st owner



ELEGANCE 88



ELEGANCE 88 - ship yard photo



ELEGANCE 88



Horizon

ELEGANCE 88

year 2007

3.699.500 Euro

- EU-Tax not paid

Ref 8574 approx. asking price in:

3.200.000 GBP or 5.141.000 US Dollar 08.07.2009 change rate at xe.com

BUILDER:	Horizon Yachts, Taiwan in order for Drettmann Germany	
MATERIAL:	GRP hull, superstructure and decks, teak laid cockpit + fly bridge, bathing platform	
LYING:	Europe / Spain - Mallorca	
LOD	27.00 m	88' 6"
LWL	22.80 m	74' 11"
Beam	6.40 m	21' 1"
Draught (unloaded)	1.88 m	6' 2"
Reg. Tonnage	85.500 kg	188.000 lbs
Tankage Fuel	10.000 litres	2.700 US Gal
Tankage Water	1.900 litres	500 US Gal
Tankage Holding	570 litres	150 US Gal

ENGINES: 2x MAN 12V CR diesel, 1.550 hp (1.140 kW) each (extra)
in lieu of standard 1300 hp (ca. 250 hours)

- cruising speed: approx. 18 knots; top speed approx. 23 knots information by shipyard on half load, clean underwatership and propellers and in standard equipment

- trim taps electric/hydraulic

GENERATOR 2x ONAN diesel

BOW THRUSTER

STERN THRUSTER

AIR CONDITIONING: CHILLED WATER AIR CONDITIONING, (extra) see add. Information a)

STABILIZERS, hydraulic operating with upgrade "ZERO-SPEED" (extra) see add. Information b) and dual pump for hydraulic system

AIR COMPRESSOR 220 V

ELECTRICAL: 220 V shore power supply & battery chargers

12/24 V boat electrical system. 220 V ring main. Cabin outlets. Alternators

- **extra dimmer for interior- & exterior light - "cable roller" with 50 m cable** installed at stern part -

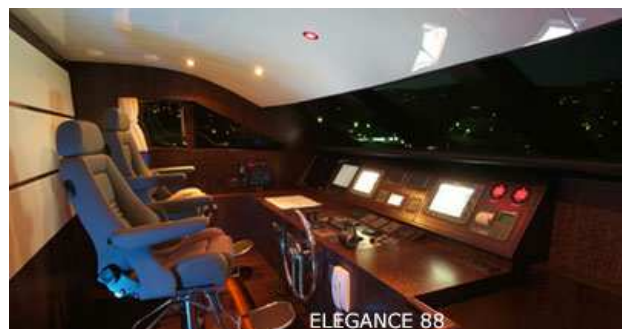
WATER & PLUMBING:

hot & cold pressurized water system, H/water by immersion heater coil & engine heat exchanger & holding tank & H/C shower at stern - electric & manual bilge pumps, **engine driven bilge pump** (above standard)

NAUTICAL & NAVIGATION: all instruments and controls on inner & fly helm station

- electric/hydraulic wheel steering system
- **3x station Bosch-REXROTH engine and bow-/stern thruster control**
- **special RECARO seats for pilot and co-pilot** at inner helm station, in lieu of standard
- Compass + speed/log and depth
- VHF radio with DSC
- **RADAR + GPS / CHART PLOTTER with overlay function** on both helm stations
- AUTOPILOT

ENTERTAINMENT: automatic Sat-TV system with TRAC-VISION G8 with **4x Sat-Receiver**, flat-screen TV's (1x 15" TV in lieu of standard), 42" flat-screen TV in owners cabin



SAFETY & VARIOUS:

- Electric reverse cycle anchor windlass, operates by remote by control from both helm stations. Main anchor and chain
- Life-Raft and safety equipment
- **electric / hydraulic gangway 4 metres (in lieu of standard) with remote control (BESENZONI)**
- **4x 150 Watt underwater lights**
- **BOAT NAME with LED back light**
- **"garage" for Jet-Ski and Jet-Dinghy at transom (stern)**
- **1x Jet-Ski "Sea Doo RXP"**
- **1x Jet-Tender "WILLIAMS 385"**
- **WICKER furniture at cockpit**
- **special corner fairleads on aft deck**
- **bow step (seat) in teak**
- **teak laid fly bridge**
- **at fly bridge: 3x sun lounges, 3x bar stools**
- **COREAN surface on fly bridge table**
- **wet bar with ice maker, fridge and sink and COREAN surface**
- **hart top roof on fly bridge with large sliding hatch**
- **STAMOID material for all outside covers**
- **Special designed exterior cushions**
- **3x Cameras (pan/zoom)**

ACCOMMODATION / LAYOUT:

- 4x cabins + crew compartment – 4x heads compartments and "Day-Toilet"**
- **Special "mirror type" glass for saloon windows and main entrance door**
 - **6x extra large portholes installed**
 - **cockpit seating & table changed** (against standard)
 - **special hatch at stairway to fly bridge**
 - **7x electric under-floor heating (stone floors)**
 - **2x stainless steel bar stools** (in lieu of standard)
 - entire vessel in "walnut" white washed

SALOON: see layout - saloon settee and table,

Bar (extras: **marble top and floor** in lieu of standard) and **Wine-cooler** -

DINING area: t table with settee and chairs, full panoramic view – opposite

HELM STATION: with full instrumentation and engine control - forward from saloon steps down to

GALLEY: see layout: fully equipped with large front opening fridge and **2nd fridge/freezer above standard, steam oven in galley, built in coffee machine**, ceramic hob, oven, sink & dishwasher, granite work surface etc., washing machine – central vacuum cleaner

MASTER STATEROOM mid-ships, see layout: over full boat width: **Queen size central double berth, 42" flat-screen TV**, storage facilities and large hanging wardrobe – en-suite bathroom with electric toilet, hand washbasin and separate shower stall

VIP GUEST CABIN forward with central double berth, opening deck hatch, wardrobe and en-suite access to forward head-compartment.

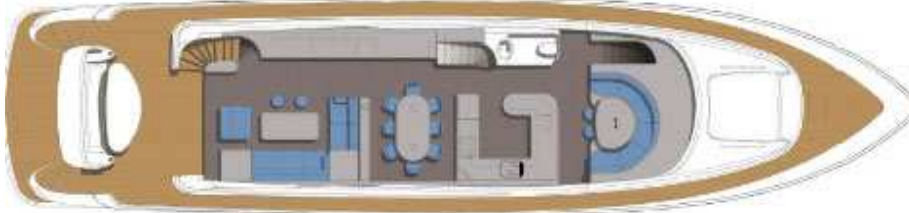
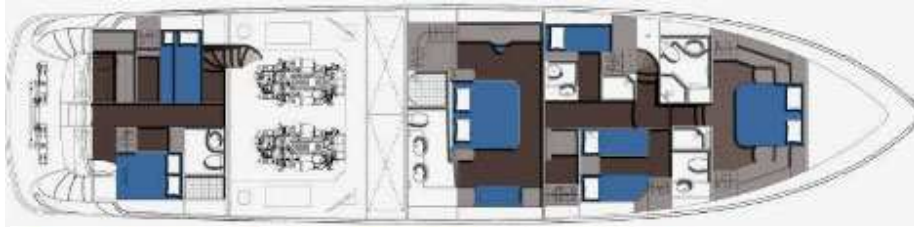
2nd GUEST CABIN forward to starboard side with twin single berth, hanging wardrobe, sharing forward head compartment.

3rd GUEST CABIN forward port side: single berth, en-suite heads compartment

HEADS compartments: electric toilets, hand washbasin and shower,

3x extra large mirrors and 3x electric towel-heater/dryer – exclusive sanitary equipment

CREW area aft: crew cabin to port side with 2x bunk berth, crew cabin to starboard side with double berth – crew galley **extra fridge**; living room, heads compartment



HORIZON Elegance 88





COMMENT: in a "like-new", ready to go condition -

Disclaimer

In this case we are acting as brokers only. The Vendor is not selling in the course of a business. Whilst every care has been taken in their preparation, the correctness of these particulars is not guaranteed. The particulars are intended only as a guide and they do not constitute a term of any contract. A prospective buyer is strongly advised to check the particulars and where appropriate at his own expense to employ a qualified Marine Surveyor to carry out a survey and / or to have an engine trial conducted, which if carried out by us shall not imply any liability for such engine on our part. Note to seller and purchaser: If the boat you are selling or purchasing is registered, please ensure that the registration is completed after the sale of the boat. If the purchaser wishes to cancel the registration is the duty of the seller to contact the Registry and inform them that the registration is to be cancelled. If the purchase wishes to continue with the registration, it is the duty of the purchaser to complete the relevant forms and post off the bill of sale to the Registrar.

Additional information without any guarantee of correctness – as a guideline only:

- a) "CHILLED WATER AIR CONDITIONING": e.g.
 - Chilled Water Air Conditioner represents the state of the art in on-board environmental climate control; Incorporating self-contained water chillers, systems are constructed with stainless steel and other corrosion resistant materials for optimal performance and stability. Tempered water is circulated through the vessel via a closed loop circuit. Each area of the vessel is governed by an individual zone control valve and an air handler which are thermostatically controlled to provide the desired temperature. Each modular chiller is staged to cycle on or off as the cooling loads vary, maintaining a pre-set water temperature for maximum comfort and efficiency.
- b) <http://www.quantumhydraulic.com/pdf/zerospeed.pdf>