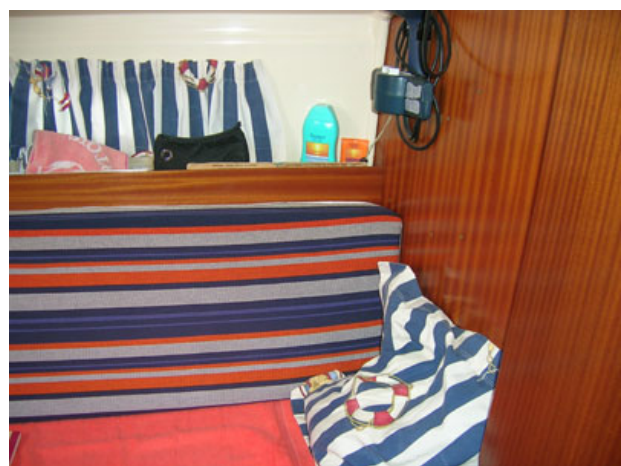




YBM - Yacht Broker Mallorca - since 1987
Boat & Yacht Broker S.L.U. - Fred Hecken
Muelle Viejo 6E/Pier 46, E-07012 Palma de Mallorca
Tel: (+34) 971 724 463 – T+Fax: 971 729 452 Mobil: 661 942 292

www.yachtbrokermallorca.eu Email: yachtbrokermallorca@gmail.com

Second-hand yacht / good condition



DUFOUR 27

15.000,- € Euro

- Built 1976

- EU-Tax paid

Ref: 8204 approx. 0 US Dollar or 0 GBP, change rate 0.09 xe.com

Builder:	Dufour, France	
Designer:	Felci & Roseo	
Material:	GRP hull & superstructure	
Lying:	Europe – Spain – Balearic Islands / Mallorca	
Lo All	8.85 m	29´
Lo Hull	8.30 m	27´2"
Beam	2.82 m	9´3"
Draught	1.68 m	5´6"
Displacement	2.500 kg	
Ballast	1.000 kg	
Tanks Fuel Diesel	60 Litres	
Tanks: Water	80 Litres	

RIG & SAILS: Sloop – Mast & boom in Aluminium, stainless steel standing rigging, backstay tensioner – LEWMAR Winches – Spinnaker pole

MAINSAIL + STORM SAIL

GENOA

JIB I + JIB II

SPINNAKER & CRUISING CHUTE

ENGINE: VOLVO PENTA MD6A 10 HP (approx. 1500 hours), stainless steel shaft, 2-bladed propeller (V 14x9) - Single lever control – water filter system – fuel filter system – engine control instruments

ELECTRICAL: Switch / Fuse panel with electric control instruments and tank gauges – batteries for service and engine, engine alternator

- **220 V shore power supply & Battery charger**

- Navigation lights

FRESH- + BLACK WATER & PLUMBING: hot & cold pressurized water system throughout, hot water by engine heat exchanger – freshwater tanks and holding tank - electrical & manual bilge pump – hot/cold shower at stern

NAUTIC / NAVIGATION: helm station with tiller steering – compass & hand-bearing compass

- log/speed & depth meter

- Autopilot AUTOHELM 800 - GPS & chart plotter RAYMARINE RL70C Raychart

• VHF radio , VHF antenna at mast top

• Clock & Barometer

VARIOS & SAFETY: Anchor, chain & chain locker - Fire extinguishers – Fenders – warps etc. – bathing ladder - transom shower - Boathook - Cockpit table and C/upholstery – large cockpit lockers - inflatable dinghy – various spar parts and tools -

HULL / DECK / COCKPIT: GRP hull – stainless steel Pulpit / split Push pit & reeling wire – forward & aft mooring cleats - cockpit lockers – bathing platform – air ventilator

INTERIOR & LAYOUT:

1 cabin / 5 berths – 1x heads compartment

CABIN forward with double berth, storage under, lockers and wardrobe, opening hatch

SALOON: settee to port and starboard (convertible to berth), saloon table with folding leafs - opening hatch, headroom approx. 1.80 m

GALLEY: cool box - 2-burner cooker - sink with cold water

HEADS compartment with toilet/hand washbasin

ENTERTAINMENT: radio/CD player



Disclaimer

In this case we are acting as brokers only. The Vendor is not selling in the course of a business. Whilst every care has been taken in their preparation, the correctness of these particulars is not guaranteed. The particulars are intended only as a guide and they do not constitute a term of any contract. A prospective buyer is strongly advised to check the particulars and where appropriate at his own expense to employ a qualified Marine Surveyor to carry out a survey and / or to have an engine trial conducted, which if carried out by us shall not imply any liability for such engine on our part.

Note to seller and purchaser: If the boat you are selling or purchasing is registered, please ensure that the registration is completed after the sale of the boat. If the purchaser wishes to cancel the registration is the duty of the seller to contact the Registry and inform them that the registration is to be cancelled. If the purchase wishes to continue with the registration, it is the duty of the purchaser to complete the relevant forms and post off the bill of sale to the Registrar