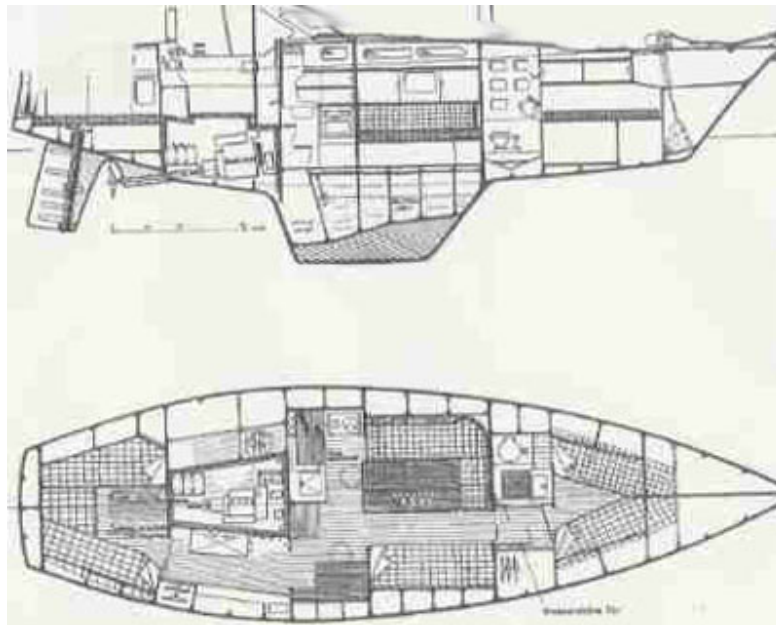




YBM - Yacht Broker Mallorca - since 1987
Boat & Yachtbroker S.L.U. - Fred Hecken
Muelle Viejo 6E/Pier 46, E-07012 Palma de Mallorca
Tel: (+34) 971 724 463 T&F: 971 729 452 Mobil: 661 94 22 92

www.yachtbrokermallorca.eu Email: yachtbrokermallorca@gmail.com

Second-hand yacht / fair condition / private yacht



Amel

SHARKI 39 C/C - year 1983

69.500- € Euro - EU TAX paid

Centre Cockpit – Cutter rigged - new mainsail + Genoa 10/2008

Ref.-Nr. 8145 approx. at a change rate on 11.07.09 xe.com ca. 97.000 US Dollar or 59.900 GBP

DESCRIPTION	Serial boat fitted out with additional extras
BUILT by	Chantiers Amel France / La Rochelle – www.amel.fr
MATERIAL built	Hull & Deck: hand laid GRP, sandwich deck, anti-skid surface
DESIGNER	Henry Amel, France
LYING	Spain – Balearic Islands - Mallorca
REGISTRATION / FLAG	Netherland

Length over All LOA	11.95 m	39`2"
LWL	9.70 m	31`9"
BEAM	3.60 m	11`9"
DRAUGHT	1.85 m	6`
DISPLACEMENT	9.700 kg	
TANKAGE: Fresh Water	750 liters	
TANKAGE: Fuel, Diesel	340 liters	

RIG & SAILS: Ketch / Cutter Rig - Aluminum Masts & Booms – masthead rigged - S/S standing rigging – FURLEX furling foresail system + furling cutter sail system with "endless-reefing line" – Winches by LEWMAR: self tailing winches and non-self tailing winches for sheets and halyards – Spinnaker equipment and spinnaker pole

SAILS:

- **GENOA NEW in 10/2008** on furling forestay
- **JIB** on furling cutter stay
- **MAINSAIL NEW in 10/2008** with slab reefing system
- **MIZZEN** with slab reefing
- **CRUISING CHUTE**

ENGINE: Perkins Diesel 45 HP overhauled in 2005 – stainless steel shaft - Dual circuit cooling with sea water filter – Engine hours counter and rev-counter
Cruising / max. speed under engine: approx. 7.8 / 8.6 knots. Range approx. 750 nm.

ELECTRICAL: Boat's power supply switch board with automatic fuses and control lamps – Voltmeter

- **Batteries: 2x 120 Ah for service and 1x 120 for engine start**
- 230 V shore power supply
- **Battery charger**
- **Inverter 12 V to 220 V**
- **Solar-module a 50 Watt**

PLUMBING, FRESH WATER: Fresh Water Tanks, gauge

- hot & cold pressurized freshwater system throughout - hot water by engine heat exchanger and/or electric 220V immersion heater
- shower to deck/stern
- manual and electric bilge pump

NAVIGATION + ELECTRONIC:

- **instruments for speed/log + depth sounder, windinstrument for speed + direction**
- **VHF Radio** COM
- **GPS** HUMINBIRD + **GPS handheld** GARMIN 45
- **RADAR** AUTOHELM/RAYTHEON
- **AUTOPILOT** AUTOHELM 3000

SAFETY & VARIOUS:

- electric reverse cycle Anchor Windlass (chain & rope), calibrated A/chain & CQR anchor - Fenders, Warps & Lines, Panama-Lines, boat hook
- 2x S/S standing protection reeling at main mast area (Granny bars) + S/S bracket at stern
- emergency tiller – Fire extinguishers – radar reflector
- inflatable Dinghy
- Cockpit table & cushions. Cockpit cover, Sun awning, cable, hoses, tools + spares

DECK & HULL CONFIGURATION: modern, performance orientated hull form, raked bow with a conventional stern. Long keel, large rudder is hung from a substantial skeg. Both the bow & stern employ shapes that provide a gradual buoyancy increase for a sea kindly motion underway. Hull protected by a very sturdy rub rail. Fixed, high & secure stainless steel Pulpit/push pit and handrail with opening port to stern - Bow fitting with anchor roller – mooring cleats - self-draining anchor locker & gas bottle storage – **CENTRE COCKPIT:** deep center cockpit, seats are properly angled as are the very high seat backrest. Steering position with wheel steering, engine control and instruments located against the forward cockpit bulkhead where it is fully protected by the rigid & **very substantial fiber-glass cockpit dodger**, large front windows with one opening part for ventilation - with the provided side curtains installed, the helmsman is completely protected from wind, waves, and spray. Comfortable upholstered helmsman seat.

ACCOMMODATION:

2 cabins / 4 berth (+ 2x convertible berth in saloon) – 1x toilet/shower
interior fittings in mahogany joinery

forward cabin with 2x single berth to port and starboard

forward toilet/shower compartment with marine toilet, hand washbasin & shower

water tight door to the saloon area

saloon with sofa to port and sofa (berth) to starboard, large saloon table with extension part,

galley to port and

chart table to starboard (next companionway),

under-deck passage to

aft cabin with double berth - all berth and sofa ´s have wooden lee boards

DOMESTIC: Gas cooker, elec. fridge, 2x sinks, hot and cold pressurized water system throughout,

ENTERTAINMENT: Radio/Cassette with speakers

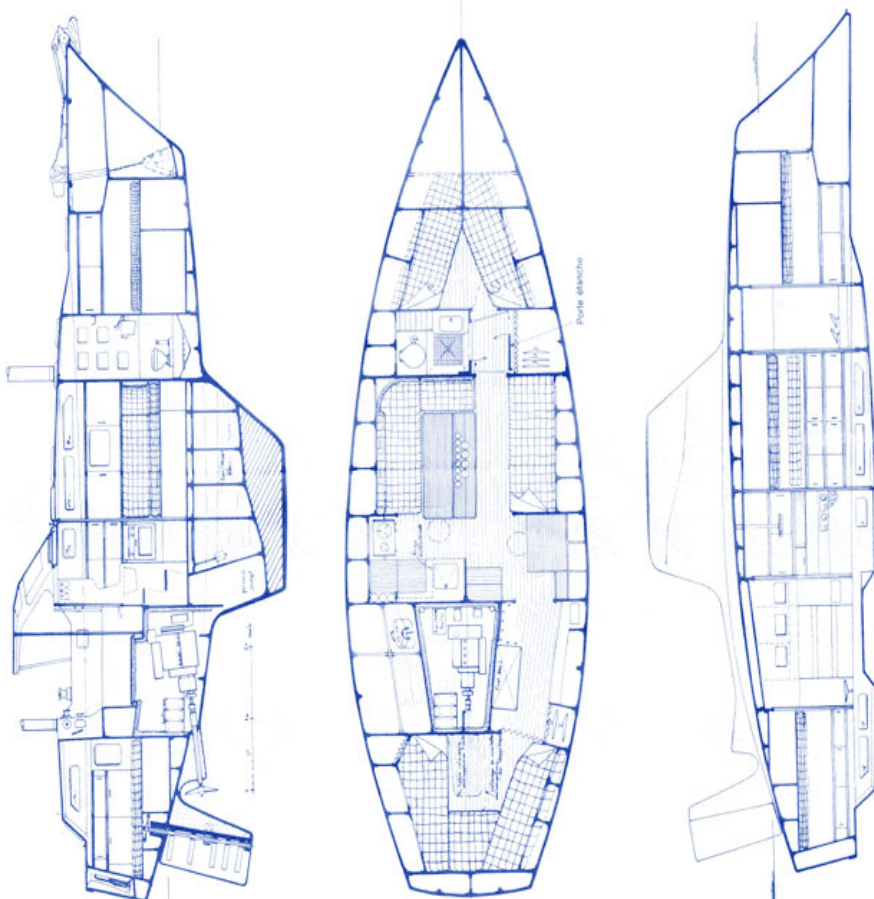


SHARKI

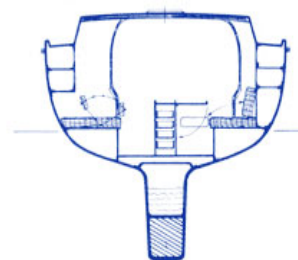


Ketch de 11,95 m

Architectes : H. AMEL et J CARTEAU



Longueur	11,95 m
Longueur flottaison	9,70 m
Largeur	3,60 m
Largeur flottaison	3,10 m
Tirant d'eau	1,85 m
Tirant d'air	14,95 m
Franc-bord AV	1,35 m
Franc-bord AR	1,15 m
Déplacement en charge	9,7 T
Poids total à vide	7,8 T
Aileron lesté	3,2 T
Surface voile maximum	93 m ²
Surface voile au près	75 m ²
Surface grand-voile	22 m ²
Surface artimon	10 m ²
Surface maximum foc	44 m ²
Surface foc d'artimon	17 m ²
Surface balloonner	44 m ²
Moteur	50 CV
Vitesse croisière moteur	7,8 nœuds
Vitesse économique moteur	6,7 nœuds
Vitesse maximum moteur	8,6 nœuds
Carburant	340 l.
Autonomie vitesse de croisière	550 M
Autonomie vitesse économique	750 M
Réservoir eau douce chaude et froide	750 l.
Jauge en Douanes (cert. n° 2723)	15,34 Tx
Homologation Marine Marchande 1 ^{ère} catégorie	



DISCLAIMER: Boat & Yacht Broker S.L.U – YBM-Yacht Broker Mallorca

In this case we are acting as brokers only. The Vendor is not selling in the course of a business. Whilst every care has been taken in their preparation, the correctness of these particulars is not guaranteed. The particulars are intended only as a guide and they do not constitute a term of any contract. A prospective buyer is strongly advised to check the particulars and where appropriate at his own expense to employ a qualified Marine Surveyor to carry out a survey and / or to have an engine trial conducted, which if carried out by us shall not imply any liability for such engine on our part.

Note to seller and purchaser: If the boat you are selling or purchasing is registered, please ensure that the registration is completed after the sale of the boat. If the purchaser wishes to cancel the registration is the duty of the seller to contact the Registry and inform them that the registration is to be cancelled. If the purchase wishes to continue with the registration, it is the duty of the purchaser to complete the relevant forms and post off the bill of sale to the Registrar.